

## Mo Singto, Thailand

**Table 1** Tree species abundance

Family	Species	Max dbh	Abundance	Basal area (cm <sup>2</sup> )
Lauraceae	<i>Actinodaphne angustifolia</i>	35.4	276	126.63
Pentaphylacaceae	<i>Adinandra integerrima</i>	50.7	102	191.70
Meliaceae	<i>Aglaia edulis</i>	40.1	57	60.25
Meliaceae	<i>Aglaia elaeagnoidea</i>	27.2	3,537	742.70
Meliaceae	<i>Aglaia lawii</i>	73.7	571	249.98
Meliaceae	<i>Aglaia odoratissima</i>	86.0	191	315.89
Meliaceae	<i>Aglaia spectabilis</i>	25.2	4	13.66
Rubiaceae	<i>Aidia densiflora</i>	43.8	841	1021.61
Simaroubaceae	<i>Ailanthus triphysa</i>	36.5	9	24.31
Cornaceae	<i>Alangium chinense</i>	24.5	1	4.71
Cornaceae	<i>Alangium kurzii</i>	10.2	4	1.31
Fabaceae-mimosoideae	<i>Albizia attopeuensis</i>	44.9	9	31.15
Euphorbiaceae	<i>Alchornea rugosa</i>	18.2	828	227.69
Euphorbiaceae	<i>Alchornea tiliifolia</i>	18.4	53	21.15
Sapindaceae	<i>Allophylus cobbe</i>	6.6	190	9.94
Annonaceae	<i>Alphonsea boniana</i>	91.4	371	836.39
Apocynaceae	<i>Alstonia scholaris</i>	40.5	12	25.66
Altingiaceae	<i>Altingia excelsa</i>	123.5	25	417.84
Rubiaceae	<i>Anthocephalus chinensis</i>	85.6	13	350.93
Moraceae	<i>Antiaris toxicaria</i>	53.4	107	106.07
Phyllanthaceae	<i>Antidesma japonicum</i>	1.7	3	0.05
Phyllanthaceae	<i>Antidesma montanum</i>	18.0	80	6.09
Phyllanthaceae	<i>Antidesma sootepense</i>	6.8	276	8.44
Phyllanthaceae	<i>Antidesma velutinum</i>	1.7	2	0.03
Meliaceae	<i>Aphanamixis polystachya</i>	35.4	1,612	484.57
Ulmaceae	<i>Aphananthe cuspidata</i>	90.0	87	210.05
Icacinaceae	<i>Apodytes dimidiata</i>	46.7	63	219.44
Euphorbiaceae	<i>Aporosa octandra</i>	15.9	1,292	139.93
Euphorbiaceae	<i>Aporosa wallichii</i>	13.9	5	1.59
Thymelaeaceae	<i>Aquilaria crassna</i>	76.0	1,905	1478.00
Fabaceae-mimosoideae	<i>Archidendron clypearia</i>	3.9	2	0.14
Fabaceae-mimosoideae	<i>Archidendron lucidum</i>	46.5	33	55.17
Myrsinaceae	<i>Ardisia fulva</i>	6.6	13	0.70
Myrsinaceae	<i>Ardisia nervosa</i>	30.3	1,454	191.29
Myrsinaceae	<i>Ardisia sanguinolenta</i>	16.0	4,042	370.03
Arecaceae	<i>Areca triandra</i>	9.2	625	76.81
Family	Species	Max dbh	Abundance	Basal area (cm <sup>2</sup> )
Moraceae	<i>Artocarpus heterophyllus</i>	6.5	1	0.33
Moraceae	<i>Artocarpus lanceifolius</i>	18.6	8	6.78

Phyllanthaceae	<i>Baccaurea ramiflora</i>	36.7	631	138.74
Euphorbiaceae	<i>Balakata baccata</i>	111.0	56	1641.53
Lauraceae	<i>Beilschmiedia affintermedia</i>	53.6	432	197.84
Lauraceae	<i>Beilschmiedia glauca</i>	58.5	2,083	1039.22
Lauraceae	<i>Beilschmiedia maingayi</i>	73.4	1,222	1543.58
Celastraceae	<i>Bhesa robusta</i>	53.0	29	81.88
Phyllanthaceae	<i>Bridelia glauca</i>	3.1	1	0.08
Phyllanthaceae	<i>Bridelia insulana</i>	51.0	127	452.79
Anacardiaceae	<i>Buchanania arborescens</i>	50.5	42	48.73
Lamiaceae	<i>Callicarpa longifolia</i>	1.5	2	0.03
Clusiaceae	<i>Calophyllum dryobalanoides</i>	40.6	2	13.78
Clusiaceae	<i>Calophyllum pisiferum</i>	21.7	22	6.30
Clusiaceae	<i>Calophyllum polyanthum</i>	2.0	2	0.04
Clusiaceae	<i>Calophyllum retusum</i>	9.3	2	0.93
Clusiaceae	<i>Calophyllum sp</i>	30.6	2	9.34
Theaceae	<i>Camellia oleifera</i>	27.8	661	95.66
Burseraceae	<i>Canarium euphyllum</i>	104.0	65	366.46
Rubiaceae	<i>Canthium coffeoides</i>	8.8	140	12.33
Rubiaceae	<i>Canthium glabrum</i>	25.2	61	26.79
Rhizophoraceae	<i>Carallia brachiata</i>	79.4	46	267.10
Betulaceae	<i>Carpinus londoniana</i>	2.0	1	0.03
Arecaceae	<i>Caryota urens</i>	10.8	7	4.80
Salicaceae	<i>Casearia grewiifolia</i>	43.5	182	39.11
Fagaceae	<i>Castanopsis acuminatissima</i>	91.7	1,188	2876.12
Cannabaceae	<i>Celtis tetrandra</i>	19.1	7	6.97
Euphorbiaceae	<i>Chaetocarpus castanocarpus</i>	42.7	2	18.81
Oleaceae	<i>Chionanthus microstigma</i>	18.3	235	29.65
Oleaceae	<i>Chionanthus ramiflorus</i>	49.4	235	214.70
Meliaceae	<i>Chisocheton cumingianus</i>	50.6	9	31.85
Meliaceae	<i>Chisocheton grandiflorus</i>	58.9	18	120.50
Anacardiaceae	<i>Spondias axillaris</i>	111.3	176	4736.79
Meliaceae	<i>Chukrasia tabularis</i>	69.5	38	151.15
Lauraceae	<i>Cinnamomum ilicioides</i>	152.6	93	1707.65
Lauraceae	<i>Cinnamomum iners</i>	35.7	39	42.65
Lauraceae	<i>Cinnamomum sp</i>	4.0	2	0.20
Family	Species	Max dbh	Abundance	Basal area (cm <sup>2</sup> )
Lauraceae	<i>Cinnamomum subavenium</i>	76.7	6,471	2757.19
Euphorbiaceae	<i>Claoxylon indicum</i>	33.8	6	27.09
Rutaceae	<i>Clausena excavata</i>	7.6	15	0.98
Rutaceae	<i>Clausena harmandiana</i>	8.8	27	3.74
Lamiaceae	<i>Clerodendrum garrettianum</i>	3.0	26	0.79
Clusiaceae	<i>Cratoxylum cochinchinense</i>	26.9	3	7.20
Crypteroniaceae	<i>Crypteronia paniculata</i>	21.2	1	3.53
Fabaceae-papilionoideae	<i>Dalbergia cochinchinensis</i>	123.3	3	123.25

Daphniphyllaceae	<i>Daphniphyllum cambodianum</i>	49.3	66	154.61
Annonaceae	<i>Dasymaschalon glaucum</i>	12.0	881	62.04
Myrtaceae	<i>Decaspermum fruticosum</i>	13.2	32	9.51
Urticaceae	<i>Dendrocnide stimulans</i>	38.5	31	43.23
Ebenaceae	<i>Diospyros glandulosa</i>	43.1	53	148.76
Dipterocarpaceae	<i>Dipterocarpus gracilis</i>	135.2	3,200	7600.34
Liliaceae	<i>Dracaena gracilis</i>	14.2	54	17.61
Lythraceae	<i>Duabanga grandiflora</i>	82.3	1	53.20
Meliaceae	<i>Dysoxylum cyrtobotryum</i>	42.2	617	684.08
Elaeocarpaceae	<i>Elaeocarpus floribundus</i>	9.1	1	0.65
Elaeocarpaceae	<i>Elaeocarpus griffithii</i>	34.2	25	52.93
Elaeocarpaceae	<i>Elaeocarpus petiolatus</i>	33.8	13	31.55
Elaeocarpaceae	<i>Elaeocarpus sphaericus</i>	60.8	304	386.21
Juglandaceae	<i>Engelhardia spicata</i>	31.5	13	22.47
Rosaceae	<i>Eriobotrya bengalensis</i>	22.4	18	15.51
Fabaceae-papilionoideae	<i>Erythrina subumbrans</i>	92.2	18	434.65
Fabaceae-caesalpinioideae	<i>Acrocarpus fraxinifolius</i>	87.8	1	60.55
Myrtaceae	<i>Eugenia cerasoides</i>	124.0	1,618	3166.95
Myrtaceae	<i>Eugenia grande</i>	61.8	267	416.07
Myrtaceae	<i>Eugenia grata</i>	34.5	29	55.48
Myrtaceae	<i>Eugenia lineata</i>	11.3	7	1.45
Myrtaceae	<i>Eugenia siamensis</i>	32.2	1,107	295.31
Myrtaceae	<i>Eugenia syzygioides</i>	87.2	873	878.61
Celastraceae	<i>Euonymus glaber</i>	58.7	11	47.96
Pentaphylacaceae	<i>Eurya nitida</i>	18.9	1,807	349.83
Simaroubaceae	<i>Eurycoma longifolia</i>	8.9	31	2.54
Euphorbiaceae	<i>Excoecaria cochinchinensis</i>	1.4	5	0.06
Euphorbiaceae	<i>Excoecaria oppositifolia</i>	37.2	555	253.50
Moraceae	<i>Ficus altissima</i>	165.2	9	695.96
Family	Species	Max dbh	Abundance	Basal area (cm <sup>2</sup> )
Moraceae	<i>Ficus annulata</i>	88.3	18	440.57
Moraceae	<i>Ficus concinna</i>	40.5	1	12.88
Moraceae	<i>Ficus fistulosa</i>	21.4	22	23.76
Moraceae	<i>Ficus glaberrima</i>	114.6	11	246.49
Moraceae	<i>Ficus hispida</i>	17.2	12	10.01
Moraceae	<i>Ficus kurzii</i>	138.6	2	151.14
Moraceae	<i>Ficus lamponga</i>	45.9	18	40.77
Moraceae	<i>Ficus microcarpa</i>	36.9	1	10.69
Moraceae	<i>Ficus nervosa</i>	96.5	39	499.03
Moraceae	<i>Ficus stricta</i>	195.2	7	735.92
Moraceae	<i>Ficus triloba</i>	23.9	6	14.13
Moraceae	<i>Ficus variegata</i>	54.4	5	40.81
Moraceae	<i>Ficus vasculosa</i>	72.1	79	129.03
Oleaceae	<i>Fraxinus floribunda</i>	70.9	40	350.45

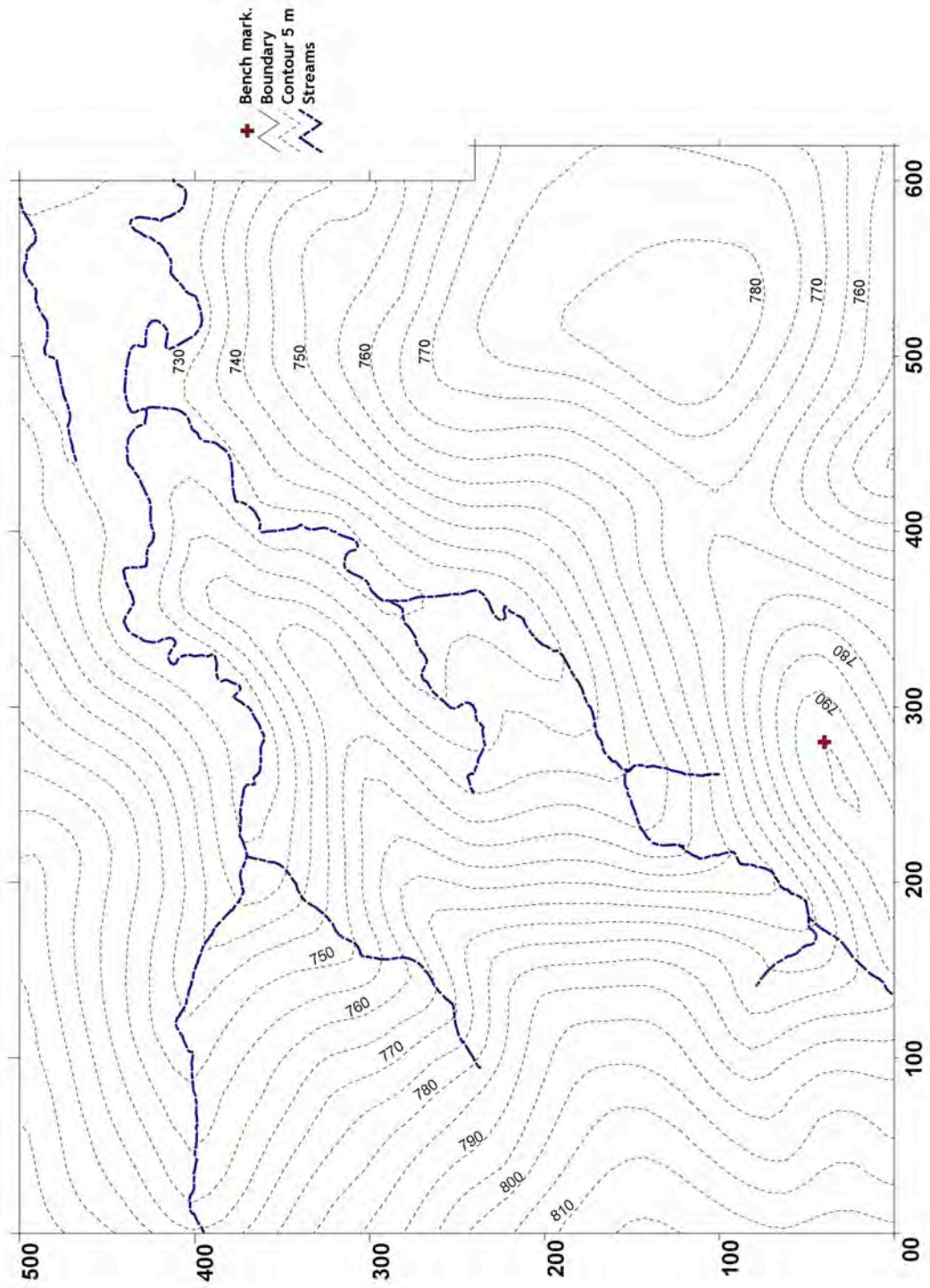
Clusiaceae	<i>Garcinia benthamii</i>	45.0	707	546.16
Clusiaceae	<i>Garcinia eugeniaefolia</i>	4.1	3	0.32
Cannabaceae	<i>Gironniera nervosa</i>	84.0	1,321	3743.98
Phyllanthaceae	<i>Glochidion assamicum</i>	22.9	67	67.56
Phyllanthaceae	<i>Glochidion eriocarpum</i>	5.2	823	15.52
Phyllanthaceae	<i>Glochidion rubrum</i>	35.0	15	32.57
Rutaceae	<i>Glycosmis cochinchinensis</i>	8.2	82	4.32
Rutaceae	<i>Glycosmis mauritiana</i>	10.5	972	67.94
Stemonuraceae	<i>Gomphandra tetrandra</i>	39.5	181	222.31
Cardiopteridaceae	<i>Gonocaryum lobbianum</i>	49.9	4,716	1585.14
Proteaceae	<i>Helicia formosana</i>	73.8	1,052	569.26
Malvaceae	<i>Hibiscus macrophyllus</i>	54.5	5	40.30
Salicaceae	<i>Homalium cochinchinense</i>	22.3	7	9.88
Dipterocarpaceae	<i>Hopea ferrea</i>	103.2	25	62.87
Dipterocarpaceae	<i>Hopea odorata</i>	78.2	1	48.03
Myristicaceae	<i>Horsfieldia amygdalina</i>	53.9	54	123.23
Achariaceae	<i>Hydnocarpus castanea</i>	47.9	1	18.02
Achariaceae	<i>Hydnocarpus ilicifolius</i>	20.4	3	3.50
Achariaceae	<i>Hydnocarpus kurzii</i>	1.6	2	0.03
Aquifoliaceae	<i>Ilex affchapaensis</i>	42.2	9	20.27
Aquifoliaceae	<i>Ilex chevalieri</i>	63.1	2,585	3902.65
Rubiaceae	<i>Ixora cibdela</i>	5.9	77	3.91
Myristicaceae	<i>Knema elegans</i>	39.2	7,550	1302.05
Family	Species	Max dbh	Abundance	Basal area (cm <sup>2</sup> )
Lythraceae	<i>Lagerstroemia calyculata</i>	39.7	1	12.38
Rubiaceae	<i>Lasianthus chinensis</i>	1.9	14	0.20
Rubiaceae	<i>Lasianthus hirsutus</i>	4.4	106	2.29
Rubiaceae	<i>Lasianthus hispidulus</i>	2.0	39	0.51
Rubiaceae	<i>Lasianthus kurzii</i>	10.3	1,024	30.77
Rubiaceae	<i>Lasianthus lucidus</i>	6.7	190	2.64
Rubiaceae	<i>Lasianthus roosianus</i>	4.0	477	10.13
Rubiaceae	<i>Lasianthus verticillatus</i>	4.8	175	6.59
Rubiaceae	<i>Lasianthus wallichii</i>	8.0	148	3.09
Vitaceae	<i>Leea indica</i>	7.5	64	7.89
Sapindaceae	<i>Lepisanthes tetraphylla</i>	8.5	239	11.02
Arecaceae	<i>Licuala spinosa</i>	4.1	38	3.67
Lauraceae	<i>Lindera communis</i>	47.1	171	164.91
Fagaceae	<i>Lithocarpus ceriferus</i>	31.6	76	71.40
Fagaceae	<i>Lithocarpus dealbatus</i>	3.7	1	0.11
Fagaceae	<i>Lithocarpus eucalyptifolius</i>	53.5	1,090	1377.76
Lauraceae	<i>Litsea beusekomii</i>	59.9	461	485.89
Lauraceae	<i>Litsea monopetala</i>	47.9	11	51.25
Lauraceae	<i>Litsea salicifolia</i>	20.0	175	59.41
Lauraceae	<i>Litsea umbellata</i>	18.6	210	56.49

Lauraceae	<i>Litsea verticillata</i>	28.4	896	276.58
Celastraceae	<i>Lophopetalum frimbriatum</i>	41.5	8	15.23
Euphorbiaceae	<i>Macaranga denticulata</i>	36.5	1	10.46
Euphorbiaceae	<i>Macaranga siamensis</i>	80.4	19	228.83
Lauraceae	<i>Machilus affsalicina</i>	68.7	18	140.97
Lauraceae	<i>Machilus bombycina</i>	60.9	367	609.14
Magnoliaceae	<i>Magnolia baillonii</i>	102.0	60	1492.82
Euphorbiaceae	<i>Mallotus cuneatus</i>	10.0	95	14.48
Euphorbiaceae	<i>Mallotus paniculatus</i>	30.1	3	7.20
Euphorbiaceae	<i>Mallotus philippensis</i>	24.8	2	4.69
Anacardiaceae	<i>Mangifera cochinchinensis</i>	55.9	276	187.42
Anacardiaceae	<i>Mangifera longipetiolata</i>	58.2	55	95.39
Bignoniaceae	<i>Markhamia stipulata</i>	38.8	7	39.96
Nyssaceae	<i>Mastixia pentandra</i>	64.6	2,641	3699.76
Melastomataceae	<i>Melastoma malabathricum</i>	2.8	3	0.12
Melastomataceae	<i>Melastoma orientale</i>	6.7	190	11.96
Rutaceae	<i>Melicope pteleifolia</i>	13.4	1,711	124.18
		Max dbh	Abundance	Basal area (cm <sup>2</sup> )
Family	Species			
Sabiaceae	<i>Meliosma pinnata</i>	50.5	3	32.89
Sabiaceae	<i>Meliosma simplicifolia</i>	26.4	3	6.73
Melastomataceae	<i>Memecylon lilacinum</i>	47.0	2,005	270.18
Melastomataceae	<i>Memecylon sp.</i>	2.8	4	14.03
Melastomataceae	<i>Memecylon umbellatum</i>	30.0	941	131.04
Rubiaceae	<i>Metadina trichotoma</i>	28.6	6	16.38
Celastraceae	<i>Microtropis pallens</i>	1.2	1	0.01
Annonaceae	<i>Miliusa lineata</i>	57.5	815	247.73
Sapindaceae	<i>Mischocarpus pentapetalus</i>	34.6	446	173.42
Moraceae	<i>Morus macroura</i>	39.0	8	41.17
Rubiaceae	<i>Nauclea orientalis</i>	46.5	456	883.51
Lauraceae	<i>Neocinnamomum mekongense</i>	16.5	7	2.15
Lauraceae	<i>Neolitsea siamensis</i>	6.0	72	4.42
Lauraceae	<i>Neolitsea zeylanica</i>	21.8	532	81.89
Sapindaceae	<i>Nephelium melliferum</i>	74.9	1,733	3238.74
Icacinaceae	<i>Nothapodytes montana</i>	24.6	102	72.84
Oleaceae	<i>Olea brachiata</i>	11.1	1	0.97
Fabaceae-papilionoideae	<i>Ormosia sumatrana</i>	66.8	22	138.02
Bignoniaceae	<i>Oroxylum indicum</i>	33.5	10	22.26
Sapotaceae	<i>Palaquium garrettii</i>	40.2	102	165.52
Rubiaceae	<i>Pavetta indica</i>	6.3	88	5.18
Lauraceae	<i>Phoebe cathia</i>	82.1	49	141.21
Lauraceae	<i>Phoebe grandis</i>	1.3	1	0.01
Lauraceae	<i>Phoebe lanceolata</i>	61.2	1,148	288.09
Phyllanthaceae	<i>Phyllanthus acutissimus</i>	2.2	5	0.10
Arecaceae	<i>Pinanga sylvestris</i>	6.8	519	39.86

Icacinaceae	<i>Platea latifolia</i>	65.8	326	888.75
Annonaceae	<i>Platymitra macrocarpa</i>	96.0	117	174.77
Podocarpaceae	<i>Podocarpus imbricatus</i>	124.0	4	173.30
Podocarpaceae	<i>Podocarpus neriifolius</i>	94.1	80	548.71
Annonaceae	<i>Polyalthia affevecta</i>	17.0	29,466	2796.47
Annonaceae	<i>Polyalthia simiarum</i>	49.3	2,401	925.43
Polyosmaceae	<i>Polyosma cfintegrifolia</i>	31.2	552	463.25
Sapotaceae	<i>Pouteria stellibacca</i>	100.3	39	146.82
Rubiaceae	<i>Prismatomeris tetrandra</i>	10.1	316	20.18
Rosaceae	<i>Prunus arborea</i>	49.9	37	160.91
Rosaceae	<i>Prunus javanica</i>	109.2	178	1431.45
Family	Species	Max dbh	Abundance	Basal area (cm <sup>2</sup> )
Melastomataceae	<i>Pseudodissochaeta septentrionalis</i>	7.2	368	28.35
Rubiaceae	<i>Psychotria ophioxyloides</i>	3.7	63	1.52
Rubiaceae	<i>Psychotria rubra</i>	4.0	42	1.24
Malvaceae	<i>Pterocymbium tinctorium</i>	57.3	2	25.82
Malvaceae	<i>Pterospermum cinnamomeum</i>	73.4	142	417.06
Fagaceae	<i>Quercus quangtriensis</i>	53.1	183	253.93
Bignoniaceae	<i>Radermachera ignea</i>	20.2	1	3.20
Myrsinaceae	<i>Rapanea yunnanensis</i>	32.5	5	20.17
Anacardiaceae	<i>Rhus rhesoides</i>	50.3	45	253.16
Meliaceae	<i>Sandoricum koetjape</i>	74.1	39	253.01
Rubiaceae	<i>Saprosma longifolium</i>	6.1	1,561	29.19
Sapotaceae	<i>Sarcosperma arboreum</i>	81.7	323	862.79
Actinidiaceae	<i>Saurauia roxburghii</i>	24.8	72	98.35
Araliaceae	<i>Schefflera heptaphylla</i>	54.5	136	540.04
Theaceae	<i>Schima wallichii</i>	98.8	663	1207.26
Santalaceae	<i>Scleropyrum pentanarum</i>	8.2	4	1.25
Santalaceae	<i>Scleropyrum wallichianum</i>	32.2	6	20.06
Dipterocarpaceae	<i>Shorea henryana</i>	73.9	7	47.89
Elaeocarpaceae	<i>Sloanea sigun</i>	82.1	1,641	6539.48
Malvaceae	<i>Sterculia balanghas</i>	35.5	14	38.92
Malvaceae	<i>Sterculia guttata</i>	37.0	21	25.80
Malvaceae	<i>Sterculia lanceolata</i>	1.4	1	0.02
Bignoniaceae	<i>Stereospermum fimbriatum</i>	8.3	7	1.32
Euphorbiaceae	<i>Sumbaviopsis albicans</i>	9.1	2	0.85
Symplocaceae	<i>Symplocos cochinchinensis</i>	55.8	3,201	3227.56
Symplocaceae	<i>Symplocos sumuntia</i>	32.3	66	38.13
Rubiaceae	<i>Tarennoidea wallichii</i>	35.7	129	32.13
Pentaphylacaceae	<i>Ternstroemia gymnanthera</i>	9.6	1	0.77
Pentaphylacaceae	<i>Ternstroemia wallichiana</i>	32.2	51	31.79
Rutaceae	<i>Tetradium glabrifolium</i>	54.9	16	146.67
Tetramelaceae	<i>Tetrameles nudiflora</i>	55.3	21	171.34

Meliaceae	<i>Toona ciliata</i>	95.0	26	376.05
Cannabaceae	<i>Trema orientalis</i>	53.4	8	23.33
Euphorbiaceae	<i>Triadica cochinchinensis</i>	68.6	4	30.77
Tapisciaceae	<i>Turpinia nepalensis</i>	41.3	36	48.07
Adoxaceae	<i>Viburnum cylindricum</i>	21.1	138	97.83
Lamiaceae	<i>Vitex quinata</i>	45.0	1	15.90
Family	Species	Max dbh	Abundance	Basal area (cm <sup>2</sup> )
Meliaceae	<i>Walsura pinnata</i>	6.6	1	0.34
Meliaceae	<i>Walsura robusta</i>	44.5	2,893	953.97
Apocynaceae	<i>Wrightia arborea</i>	2.2	3	0.07
Polygalaceae	<i>Xanthophyllum virens</i>	40.9	127	77.64

**Figure 1** Terrain map of the plot showing contour lines, elevation, bench mark, and streams.



**Figure 2** A map of Thailand showing location of Mo Singto Forest Dynamics Plot in Khao Yai National Park, Thailand

